

Celebrity X Cruises®



The History Museum, of Hood River, Oregon, and The Fabric Patch

Invites you to join us on an extraordinary fundraising travel event that promises to be a once-in-a-lifetime experience. Get ready to set sail on Celebrity Edge, with its unique outward-facing design to the industry-first Magic Carpet® that reaches heights of 13 stories above sea level on a voyage to the breathtaking landscapes of Alaska, all while supporting the museums mission to preserve history and ignite curiosity.



**Departing August 16, 2024
Celebrity Edge 7 - Night
Alaska & Dawes Glacier Cruise
Round Trip Seattle, WA**

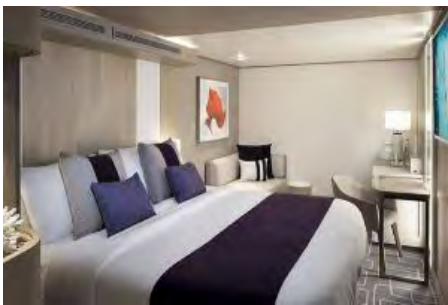


**EMBARK ON AN UNFORGETTABLE JOURNEY OF
DISCOVERY, EXPLORING ALASKA'S WONDERS AND
SUPPORTING
THE HISTORY MUSEUM OF HOOD RIVER COUNTY!**





"The real voyage of discovery consists not in seeking new landscapes, but in having new eyes."



360° Virtual Tour



360° Virtual Tour



360° Virtual Tour



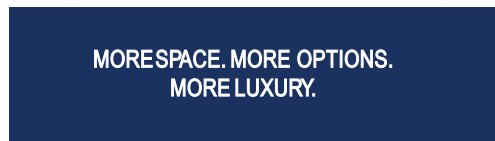
Inside Stateroom from \$2656.91 pp*



Oceanview Stateroom from \$2846.91 pp*
**Double occupancy*



Concierge Veranda Stateroom from \$3720.91 pp*



Includes:

7 Night cruise aboard the Celebrity Edge in chosen stateroom accommodations, all meals on-board ship in complimentary venues, 24 hour room service (convenience fee may apply, Classic Beverage package; beers, spirits, cocktails, liqueurs, wines by the glass up to \$10 USD, sodas, juices, specialty coffees and bottled water, Gratuities, Surf WiFi Package, On-board entertainment including shows, discos, comedy clubs, bars, lounges, etc. provided by Celebrity Cruises, age appropriate kids programming for toddlers, kids, and teens, use of all fitness facilities, pools, hot tubs, sports courts, etc. Taxes, fees and port charges, exclusive nightly group dining, all on board meet & greets with History Museum, and special guest and YouTube personality Cindi Rang of the Fabric Patch, and all other special guests, and group events.

As a thank you for your generous support, participants in this incredible journey will enjoy:

- VIP Events: Join us for special gatherings on board, featuring guest speakers and cultural insights that enhance your travel experience.
- The History Museum Membership: Receive a complimentary annual membership, providing you with exclusive access to museum exhibitions and events.
- Recognition: Your generosity will be celebrated on our website, social media, and at the museum itself.

**To participate and have access to this exclusive group event, the cruise must be booked through RGE Travels.*

***Custom private group shore excursion event will be available at additional cost, to be announced and registration forthcoming.*



www.hoodriverhistorymuseum.org



The Pioneer Society meeting of 1913, assembled in front of the Riverside Church on State Street.

The History Museum of Hood River County is a vibrant center for engaging all people in a better understanding of our community's heritage that preserves the past, relates it to the present and shapes our future. It began with avid collectors of local stories, the 1907 Pioneer Society later morphed into The History Museum of Hood River County. Created in 1978, The History Museum is an active participant in its vibrant multi-cultural community and is led by the Heritage Council, a 501c3 non-profit organization. The Council members are a diverse group who have many cumulative years of experience in education, law, business, retail, social work, government organizations, the arts, historic research, and various other local community cultural and governmental entities. The non-profit Museum brings the region's past and present to life through permanent displays, temporary exhibitions, and programs. The museum holds in trust over 30,000 artifacts, documents, and media that represent the diverse heritage of Hood River County and the Columbia Gorge. We bring to life the stories of all the peoples of this region through education, discussion, and exhibitions. Celebrating and embracing the Hood River County and the mid-Columbia River Gorge area's diverse cultural heritage, preserve its unique story, and continuing to encourage the value of understanding how history shaped the past, impacts the present, and influences the future.

By embarking on this enchanting cruise, you're not only creating memories that will last a lifetime but also contributing to a meaningful cause.

The History Museum is dedicated to preserving their rich heritage and inspiring generations to come.

Your participation in this fundraising travel event will directly support their educational programs, exhibitions, and community outreach initiatives.



Watch us on
You Tube



CINDI RANG

Cindi learned to quilt from her frugal grandmother while learning to make her own clothes, and didn't know there was such a thing as "batting" until she was 22. She loves quilting, every aspect of it, from hand embroidery and hand applique to machine quilting and long arming. She enjoys the ability to make a quick quilt in two hours, and the challenge and reverence of a hand pieced quilt that takes three

three years. Cindi has been designing quilts, bags, wall hangings and pincushions and writing patterns for 20 years. She has over 80 original designs and has been featured in international and national publications. Cindi is a retired Nurse Practitioner. She leads most of the clubs, teaches many of the classes, and hosts most of the videos/tutorials featured on the you-tube channel.

GET TO KNOW US

The RGE Travels brand is unique as we don't have a "brick and mortar" location so when it's time to meet, we come to you or meet you at a location near you. That's why we are your "Travel Concierge"! As we are US Veterans at RGE Travels, we try to live by our motto: Thank you for giving us the opportunity to serve you! It is amazing how 2 people from opposite sides of the USA have so much in common and that commonality is travel. Both of us have lived in multiple states during our youth and we each ignited our travel bug while serving overseas and during deployments in the



www.rgetravels.com

US Air Force and the US Army. After the military, our careers in the airline industry and security and real estate didn't quell that inquisitive travel bug and in fact pushed us farther into other destinations. With all that travel and our combined destinations, RGE Travels literally has circled the globe to bring this excitement to your travels. This is the reason why we are asking you to join us on another adventure and mingle with people you never met while enjoying the sights, sounds and surroundings because when you travel with us, you're never alone.

TRAVEL WITH US



BRIANNA RANG MOTZKUS

At the tender age of 4 she sat down for the first time and learned to sew. She was so small that her mom had to put the foot pedal on the table and she guided the fabric with her left hand and pushed the pedal with the right. When she was 6 her mom (Cindi Rang) opened The Fabric Patch in Ephrata, WA. Brianna has been in the shop for nearly 20 years. She has taught quilting classes, designed some of the shops best selling patterns in the shop, won countless awards and has worked as the store manager since she graduated from Seattle Art Institute

where she majored in Fine Arts and Textile Design. Brianna is exceptional at predicting future trends in fabric design and quilt design because of her experience. She prides herself in designing quilt patterns that are for many skill levels and provides very accurate yardage so the customer has very little waste. She has sold 1000's of her own patterns just out of one shop. She started long arming at 6 and at 16 was professionally quilting for customers.

www.fabricpatch.net



CLICK LOGO TO REQUEST BOOKING

**This booking form for informational purpose only*

RESERVATION & TRAVELER INFORMATION FORM

Celebrity Edge 7 - Night Alaska, and Dawes Glacier Cruise
Round Trip from Seattle, WA
Departing August 16 - 23, 2024
The History Museum of Hood River County & The Fabric Patch

Traveler Information

Print name (first/middle/last) EXACTLY as it appears on the Passport you will be using while traveling.

Traveler 1: _____

Traveler 2: _____

Address: _____

City: _____ State: _____ ZIP: _____

Country: _____ Email: _____

Cell #1: _____ Cell #2: _____

Roommate's Name (if not Traveler 2): _____

Type of Stateroom Requested - * Per person Double Occupancy

___ Inside from \$2656.91* ___ Ocean View from \$2846.91*

___ Concierge Class w/Infinite Veranda from \$3720.91*

___ Single Occupancy specify stateroom type: _____

Deposit per person \$750 USD* Final Payment Due: 14 MAY 24

(Deposit for single occupancy \$1150 USD)

*\$300 of deposit nonrefundable per person

Additional Stateroom Options - Rates provided upon request

___ Aqua Class ___ Sky Suite ___ Aqua Suite ___ Sunset Sky Suite

___ Penthouse ___ Royal Suite ___ Celebrity Suite

Captains Club Number: _____

Crown & Anchor Number: _____

Flight Arrangements Needed

Airport Departure City: _____

Airport Return City: _____

Frequent Traveler Number and Airline: _____

**Air will be booked no later than 90 days before departure. Should any flight interruptions occur, Air by Celebrity will notify cruise ship and provide assistance and alternate travel arrangements.*

Optional Pre/Post Cruise Package*

___ Optional 1 Night Pre-Cruise Hotel - Seattle, WA

___ Optional 1 Night Post-Cruise Hotel - Seattle, WA

**Packages include accommodations, airport to hotel /port transfers, and breakfast
Pricing details provided upon optional package selection and request.*

Security Information

To make your vacation as enjoyable as possible and to assist us in preparing official documentation, please provide the following:

Traveler 1: ___ Male ___ Female

Date of Birth (MM/DD/YYYY): ___/___/___

If air is included: Add Redress #, if available: _____

Passport Number: _____ Citizenship: _____

City/State/Country of Birth: _____

Date of Issue: _____ Exp. Date: _____

Traveler 2: ___ Male ___ Female

Date of Birth (MM/DD/YYYY): ___/___/___

If air is included: Add Redress #, if available: _____

Passport Number: _____ Citizenship: _____

City/State/Country of Birth: _____

Date of Issue: _____ Exp. Date: _____

Passports and VISAS

All guests must have a valid passport with at least 6 months validity from return date. It is the responsibility of each guest to ensure any applicable visas for all countries visited have been obtained prior to departure. Failure to obtain correct documentation will mean the guest will be unable to participate in particular shore excursions and may be denied boarding and/or entry into certain countries. Meeting necessary passport and visa entry requirements and costs is the sole responsibility of guests.

Emergency Contact

Name: _____ Relationship: _____

Tel: _____ Cell: _____

Health

Some areas on the ship may involve considerable walking, stairs or inclines. Travelers should be in reasonably good health, persons requiring assistance advised to be accompanied by a companion who is capable of and totally responsible for providing assistance. All needs of this nature must be relayed in advance of travel.

Initial here to indicate you have read and understand this: _____

___ Dietary dietary restrictions, if any: _____

___ Handicapped /mobility assistance needed - check mark and list below:

Dining: Exclusive daily group seating at specified same tables each night. 5:30PM -6:00PM* - hours of dining room operation vary according to ship schedule.

Includes: 7- Night Alaska, Dawes Glacier Cruise, taxes, fees and port charges, all meals at complimentary venues, including 24 hour room service (convenience service fee may apply), classic beverage package: beers, spirits, cocktails, liqueurs, wines by the glass (up to \$10 USD each), sodas, juices, specialty coffees and bottled water, gratuities and unlimited Surf Wi-Fi, event gift, entertainment including shows, discos, comedy clubs, bars, lounges, etc. Age appropriate kids programming for toddlers, kids, and teens, use of all fitness facilities, pools, hot tubs, sports courts, etc. and exclusive daily group dinner dining and meet & greets with our the History Museum member, and special guest and YouTube personality Cindi Rang of the Fabric Patch! Included quilting classes and kits will be available details forthcoming.

**To participate in this special group event cruise, cruise booking must be made through RGE Travels.*

Excludes: Airfare, airport transfers, post/pre hotel/tour, shore excursions, travel insurance, laundry, phone calls, items of a personal nature, custom private group excursion event - to be announced.

Perks:

Non-suite staterooms

All Included: Classic beverage package*; gratuities and Surf Wi-Fi

***CLICK HERE FOR DETAILED LIST OF BEVERAGE TYPES INCLUDED**

Suites - The Retreat, exclusive restaurant, lounge and outside deck area, premium drinks, premium Wi-Fi, tips, and an onboard credit to spend almost any way you like.

Travel Insurance:

Travel insurance is available and is strongly recommended. Travel insurance is offered to protect your dollar investment due to unforeseen circumstances and should be purchased within 14 days of your reservation for pre-existing medical condition exclusion waiver protection.

Travel insurance is provided though Travel Guard/TravelEx. For any illness, cancellations or changes, the client will follow Travel Guard's and TravelEx policies and regulations. An optional cost efficient quote will be emailed along with your trip confirmation and can be purchased with your card on file. Alternatively, you're welcome to obtain your own travel insurance.

____ Check Mark Acknowledgment

FOR QUESTIONS CLICK HERE

Terms & Conditions

All payments ticketed by Celebrity Cruises will be refunded, less the applicable cancellation fees as outlined below.

Deposit: \$750 deposit \$300 of deposit is non-refundable per person

Group Refund and Cancellation Schedule Per Person

90 or more days prior to cruise date - \$250 per person
89 to 75 days - \$250 and 25% cruise fare charge per person
74 to 61 days - \$250 and 50% cruise fare charge per person
60 to 31 days - \$250 and 75% cruise fare charge per person
30 to 0 days -100% cruise fare charge per person
100% cruise fare charge per person for no shows or if cancellation is made after travel is scheduled to begin. No refund for unused portions of the trip.

Itinerary: RGE Travels/Holiday Cruises & Tours/Network are not responsible for any changes to itinerary before and during cruise by Celebrity Cruise Lines.

Booking Terms and Conditions: These conditions incorporate the basis upon which bookings are accepted by RGE Travels/Holiday Cruises & Tours/ Network and Celebrity Cruise Lines. By making a booking you are agreeing to these terms & conditions. Conditions on this page do supersede conditions stated in the Brochure however for additional terms and conditions not stated here please refer to the 'Booking Conditions and other Important Information' pages on website and www.celebritycruises.com. These must be studied prior to making the commitment of paying the deposit as they must be referred to. Additional terms and conditions may be applicable to group bookings and will be advised as they become known.

All guests will be required to adhere to all health and safety protocols established by Celebrity Cruise Lines at time of cruise. For more information concerning present protocols go to www.celebritycruises.com.

Talent/Artist: RGE Travels/Holiday Cruises & Tours are not responsible for the content or cancellation of talent/artist before and during cruise.

I have read, understand and agree to all terms and conditions, including penalties that result in the event of a cancellation.

Traveler 1: _____

Traveler 2: _____

Date: _____

Typed full name will be used as signature

RESERVATION PROCESS

CLICK LOGO TO REQUEST BOOKING

**This booking form for informational purpose only*



Affiliate of

